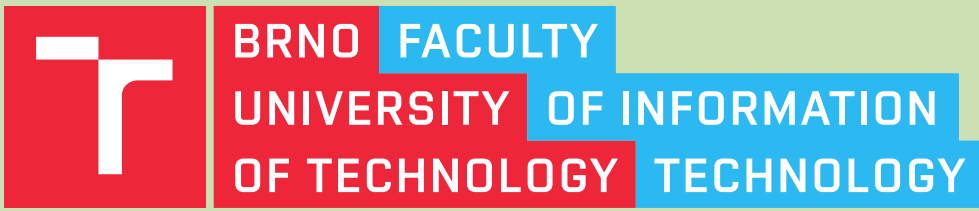


# Tool for rendering maps with traveled routes

2025

Author: Lukáš Kotoun

Supervisor: prof. Ing. Adam Herout Ph.D.



## Motivation

- Custom large-format high-resolution maps
- For decoration or as a signpost
- Showcase your athletic performance through traveled routes



Figure 1: Example of the result usage.

## Usage

### 1. Area and paper selection

- Area by name or coordinates
- Paper size in millimeters
- Automatic paper ratio based on area



Figure 2: Example of an area selected by name.

### 2. Traveled routes upload and styling

- Routes in GPX format
- Use the default style or create your own



Figure 3: Area with a GPX route.

### 3. Map elements and design

- Choose from the available map designs
- Select elements and adjust their size
- Or leave it to automatic selection based on area and paper size

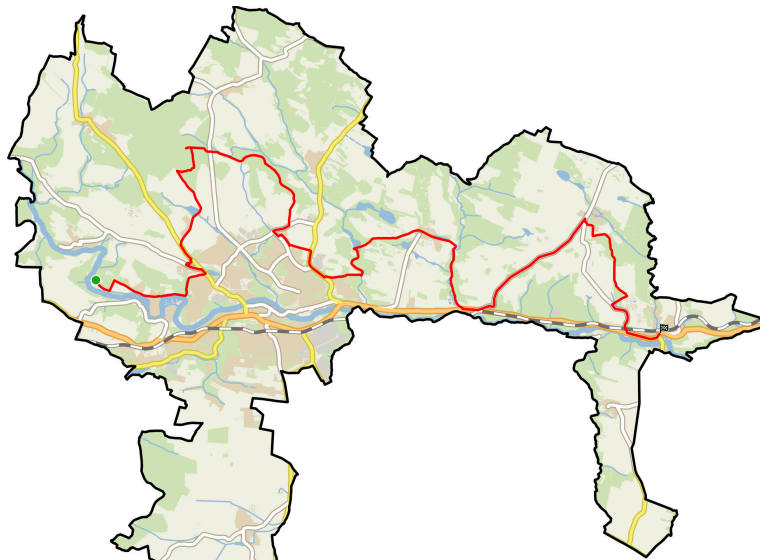


Figure 4: Map with styled elements.

### 4. Rendering

- Create a full map or a quick preview
- Rendering with GeoPandas and Matplotlib on a Python server
- All map settings on the frontend, using Svelte.
- Use OpenStreetMap datasets

## Results

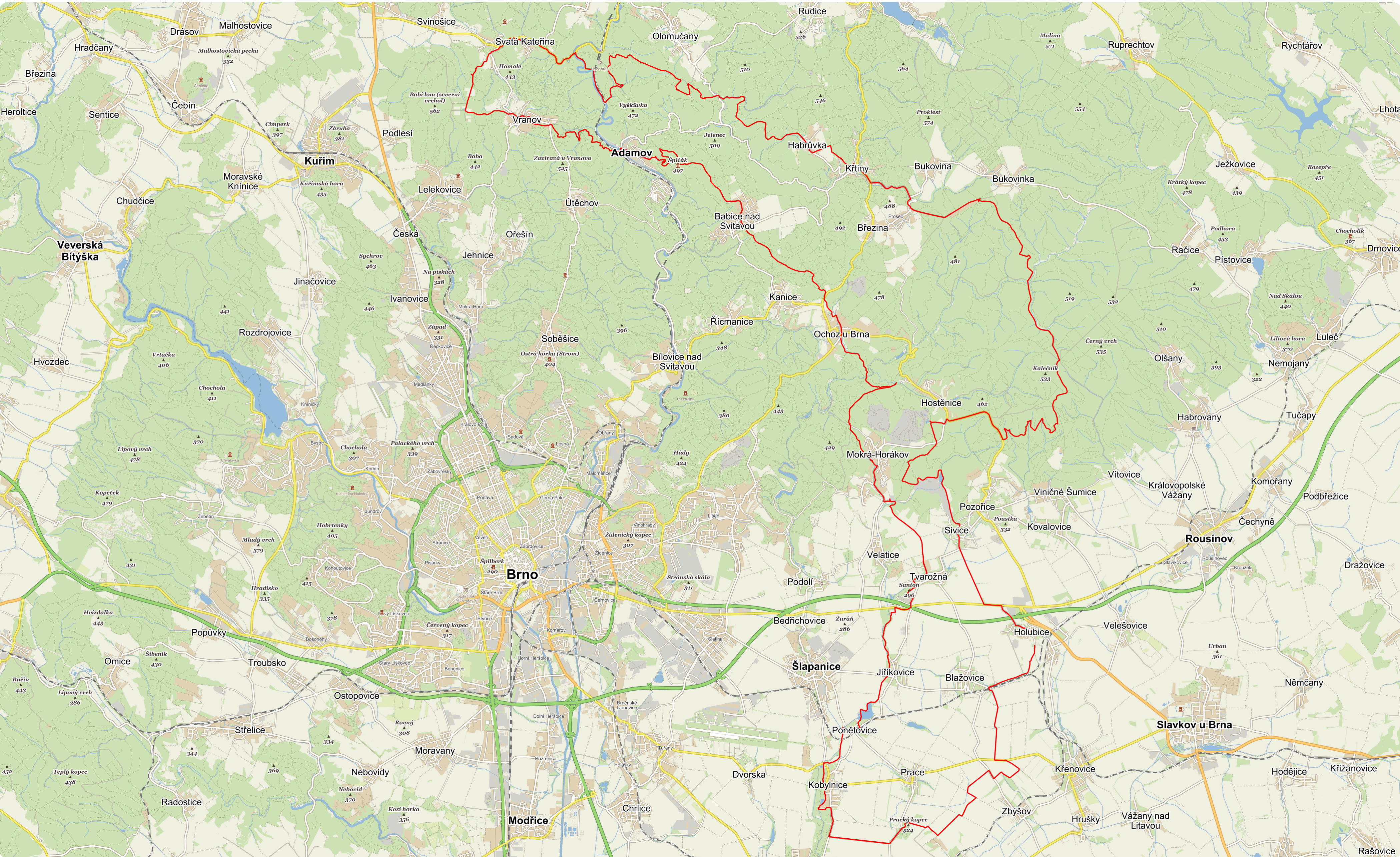


Figure 5: Map result with GPX route and mapyc selected style.