

Trip Planner for South Moravian Region with Walking Integration



GITHUB



APPLICATION

Author: Jan Kvapil
Supervisor: Ing. Jiří Hynek, Ph.D.

OBJECTIVE

Create a trip planner for planning journeys combining public transport and walking

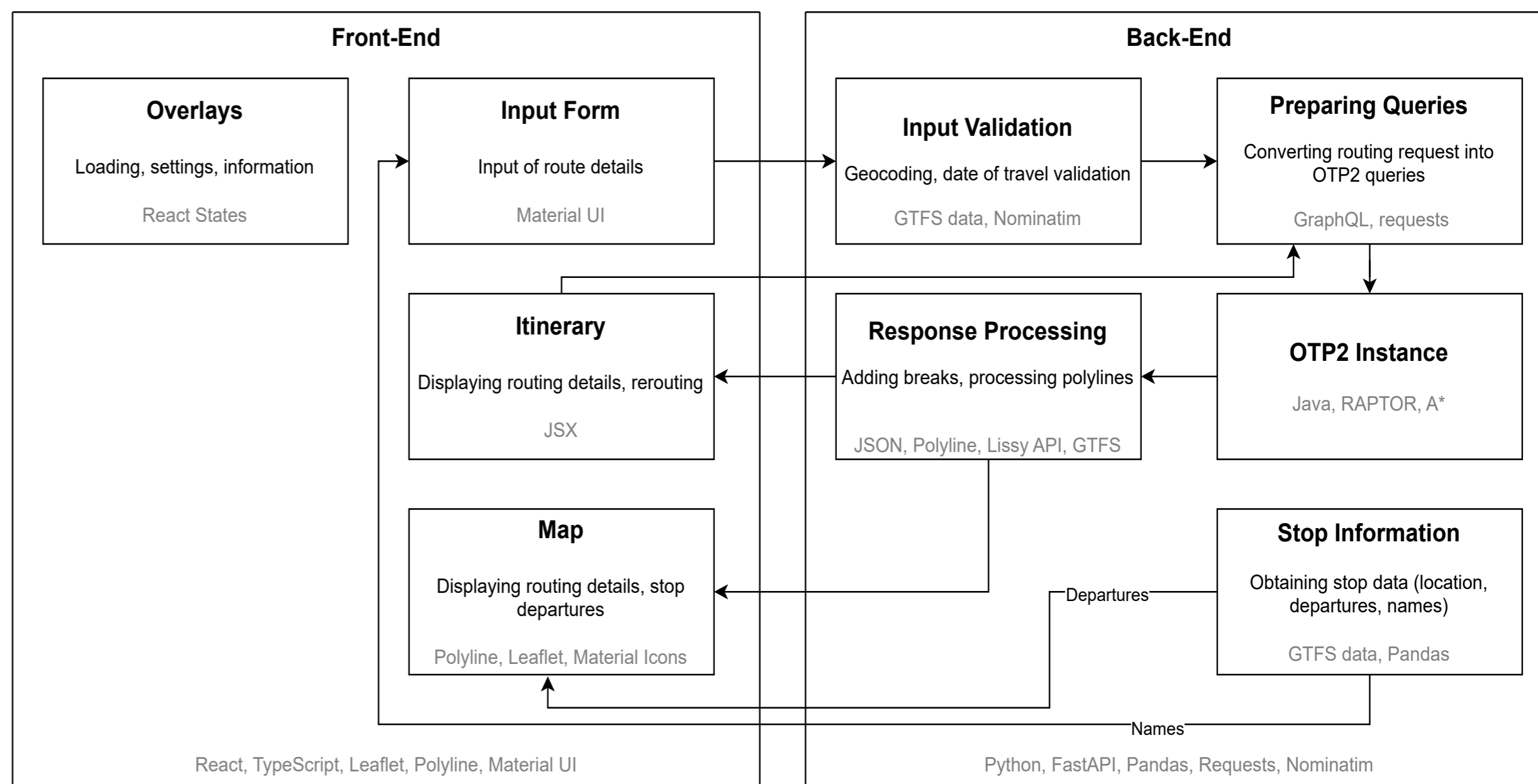
APPROACH

- Single-Page Web Application
- Czech Republic OSM Data
- OpenTripPlanner 2 Router
- IDS JMK GTFS Data

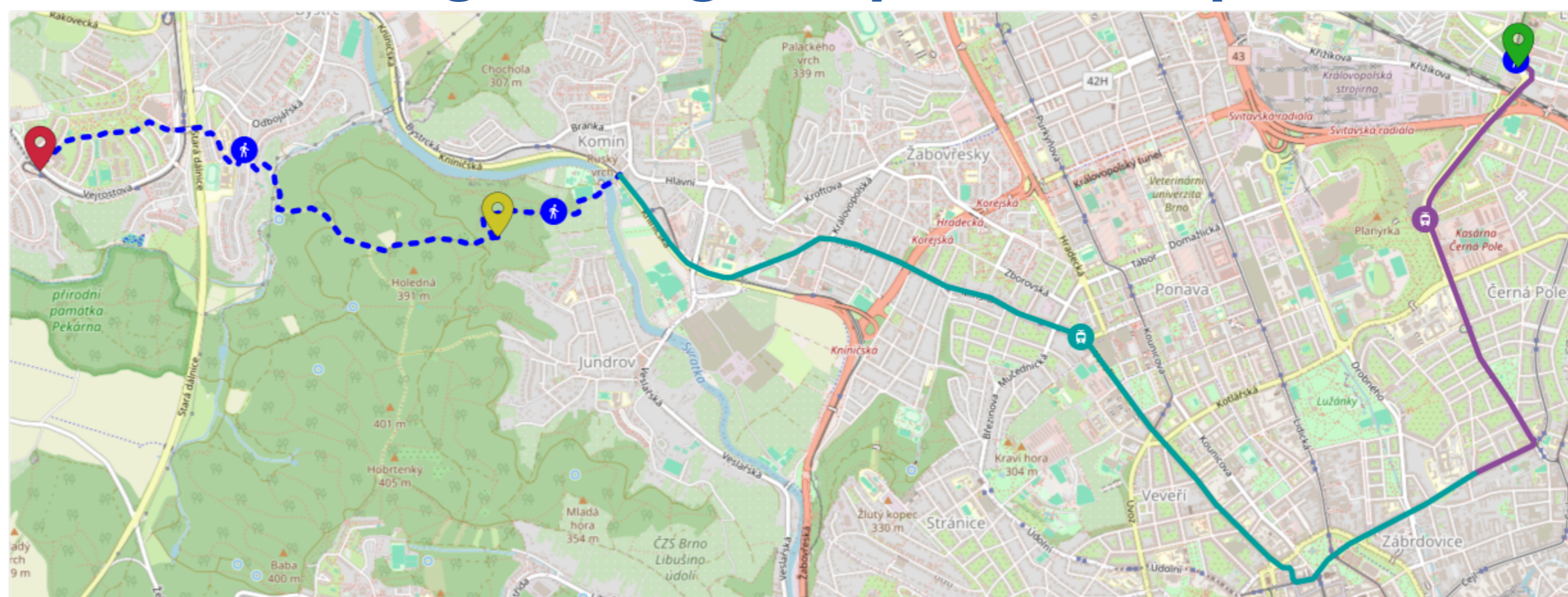
CORE FEATURES

- Easily customize journeys
- Set routing preferences
- Combine walking and public transport
- Define breaks at points of the journey
- Browse journeys in the map or itinerary
- Re-route planned journeys
- Show stop departures
- Works with any GTFS and OSM data

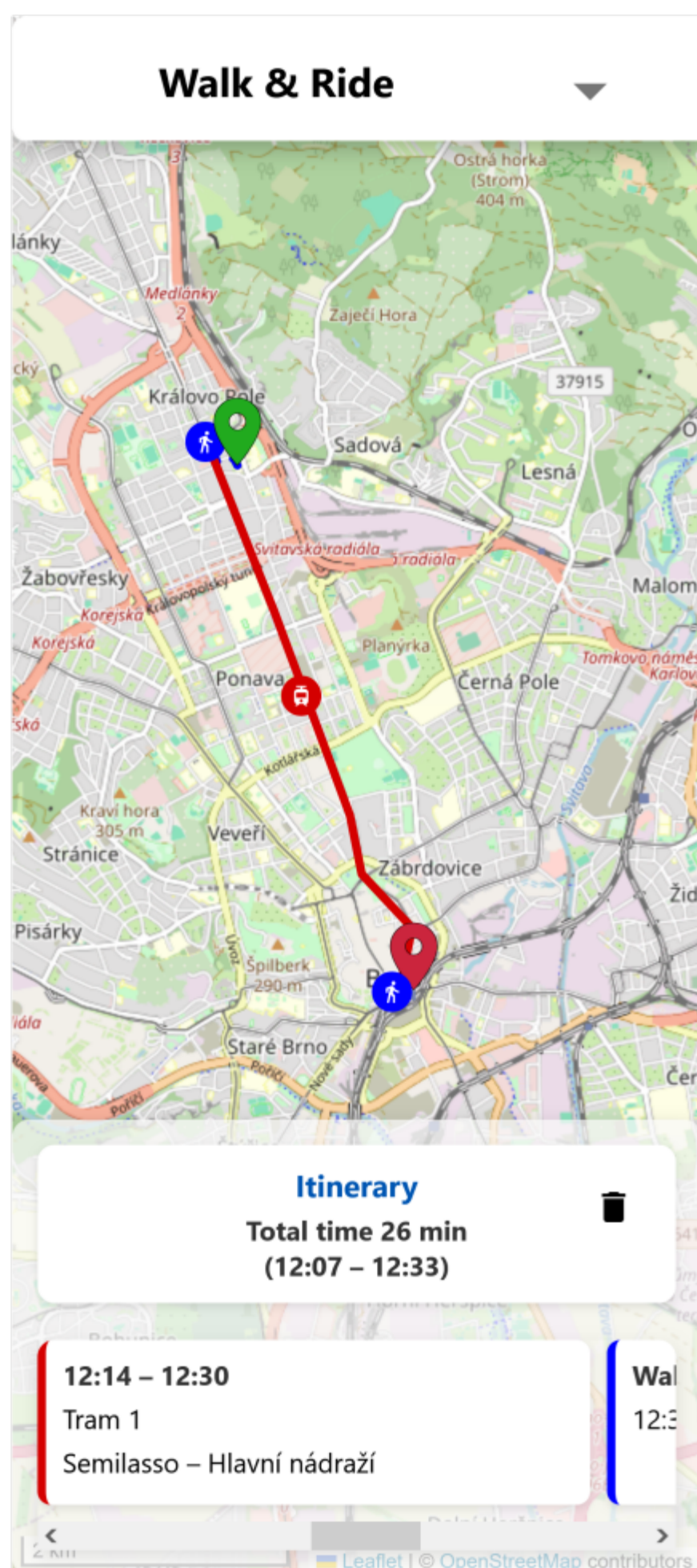
System Architecture (1)



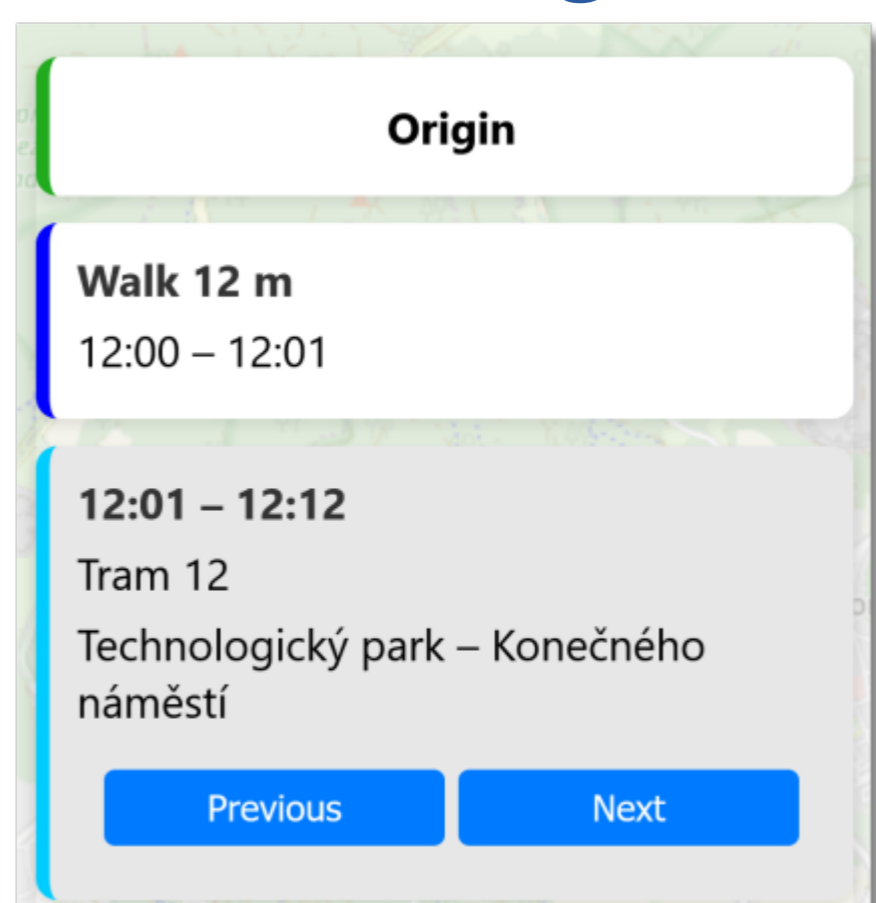
Combining walking and public transport (2)



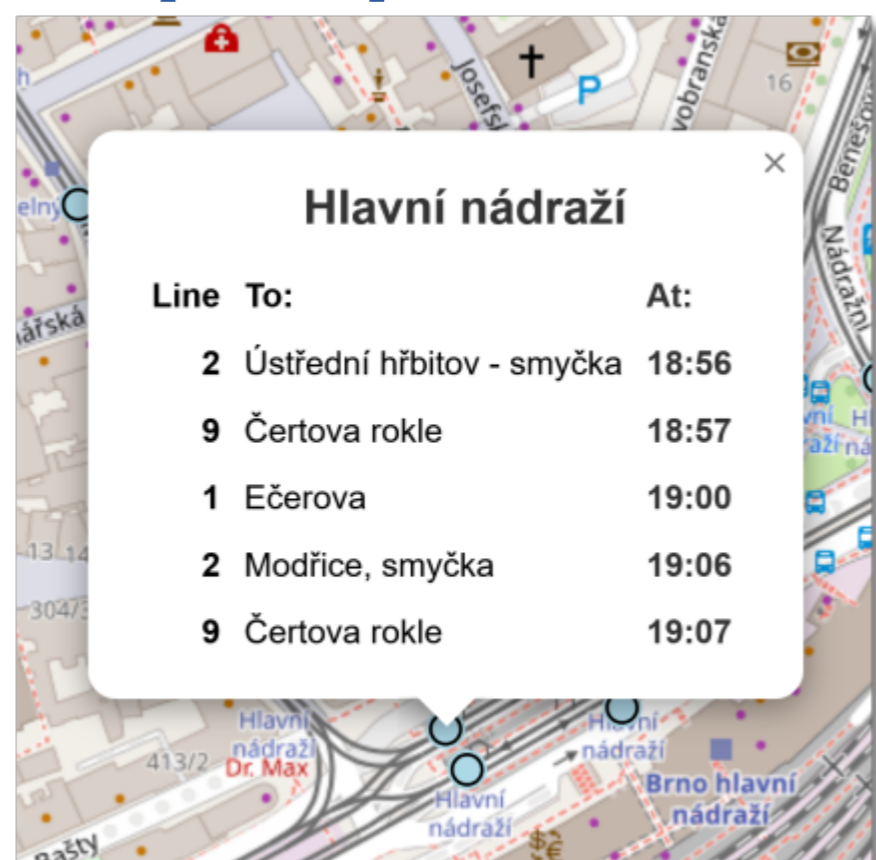
Mobile UI (3)



Re-routing (4)



Stop Departures (5)



GTFS + OSM = Working Application (6)

