



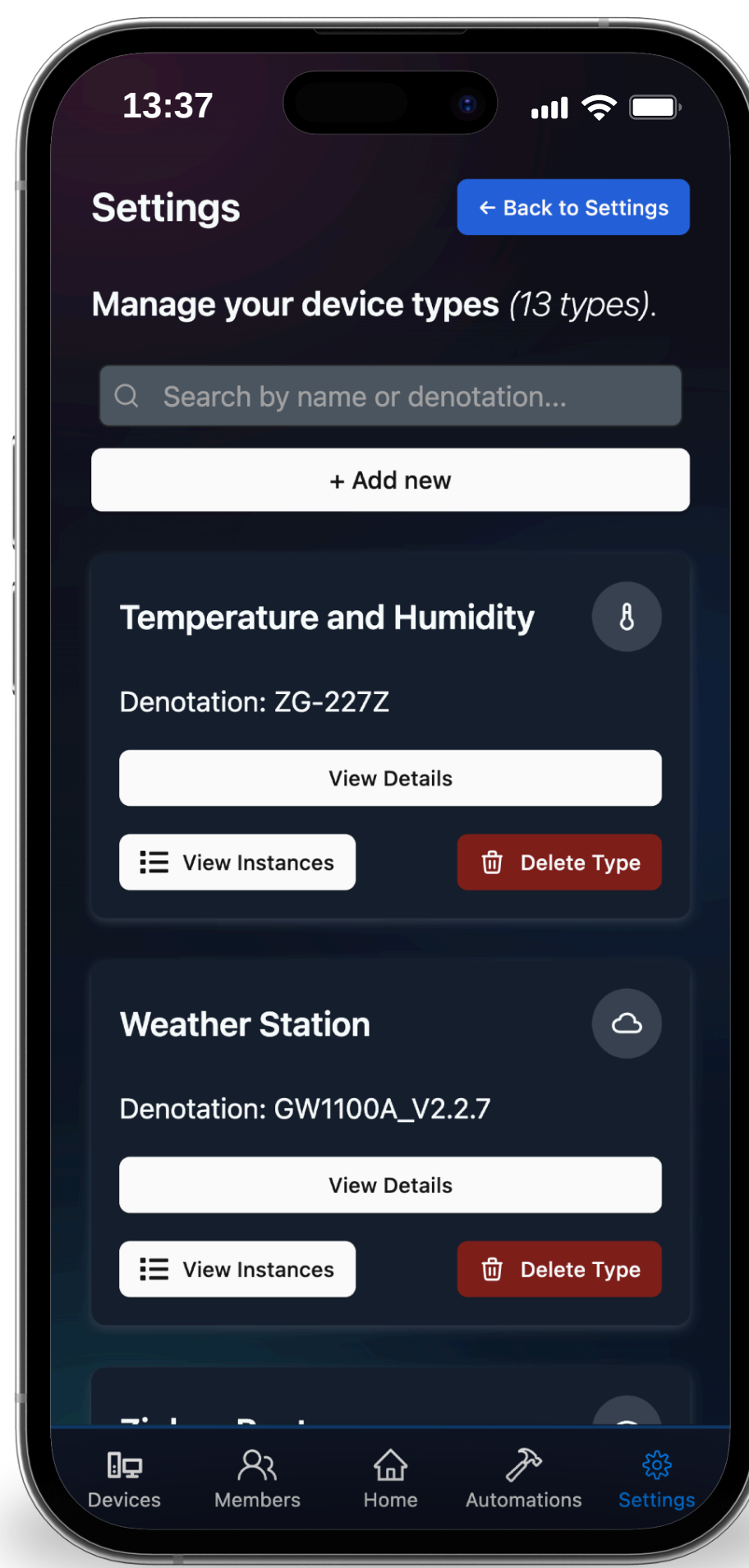
Screen 1: Dashboard

- Main customizable dashboard
- Breakpoint-specific layouts
- Real-time updates and historical data
- Uses key performance indicators



Screen 2: Device Groups

- Group control and management
- Real-time status updates
- Intuitive cards



Screen 3: Device Types

- Custom device types configuration
- Easy management
- Commands support

TRY THE APP!



PWA Support  
Fully Responsive  
Dark mode  
Runs on a single RPI

## Dynamic Device Type Configuration Flow

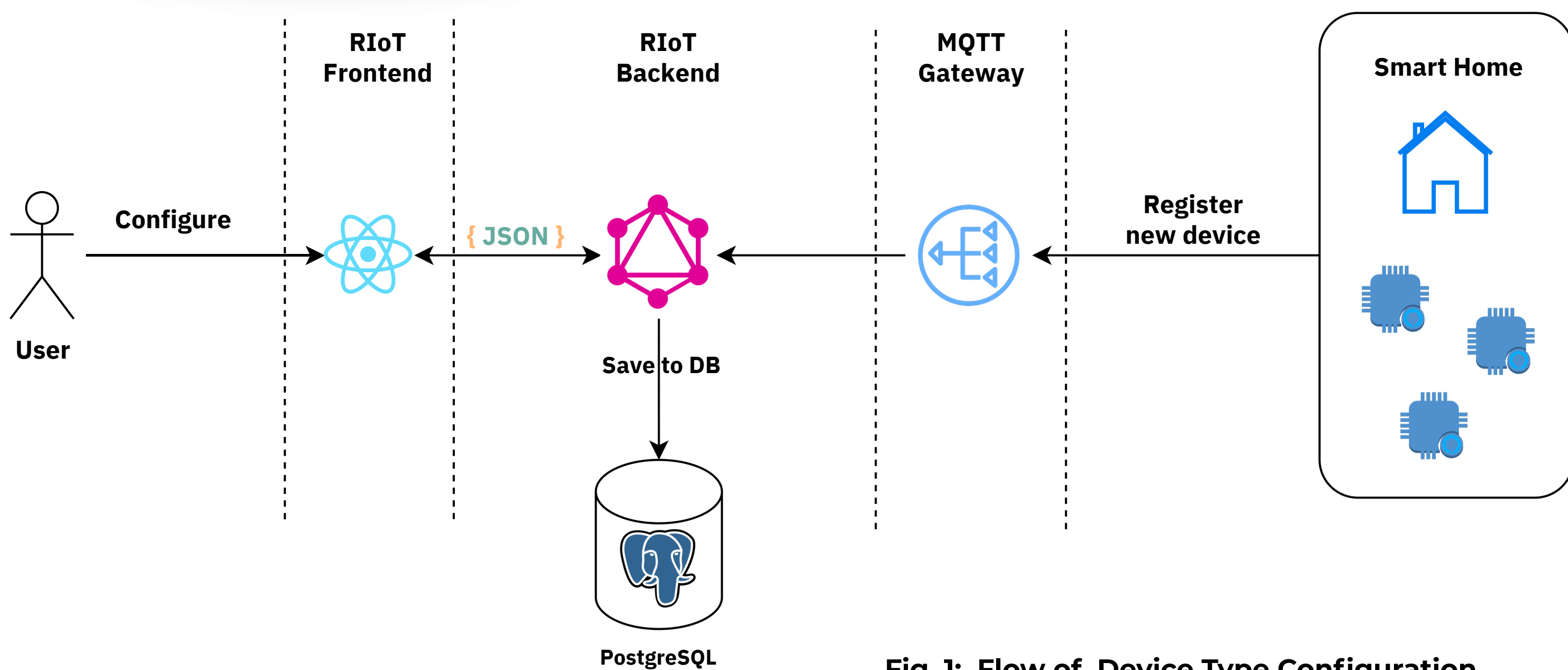


Fig. 1: Flow of Device Type Configuration

Users can define new device types directly through the RIoT frontend by submitting the necessary parameters and MQTT denotation. This configuration is sent as a JSON payload to the backend via GraphQL and stored in a PostgreSQL database. Once registered, device instances that match the defined type appear on the Devices page.

## Available Visualizations

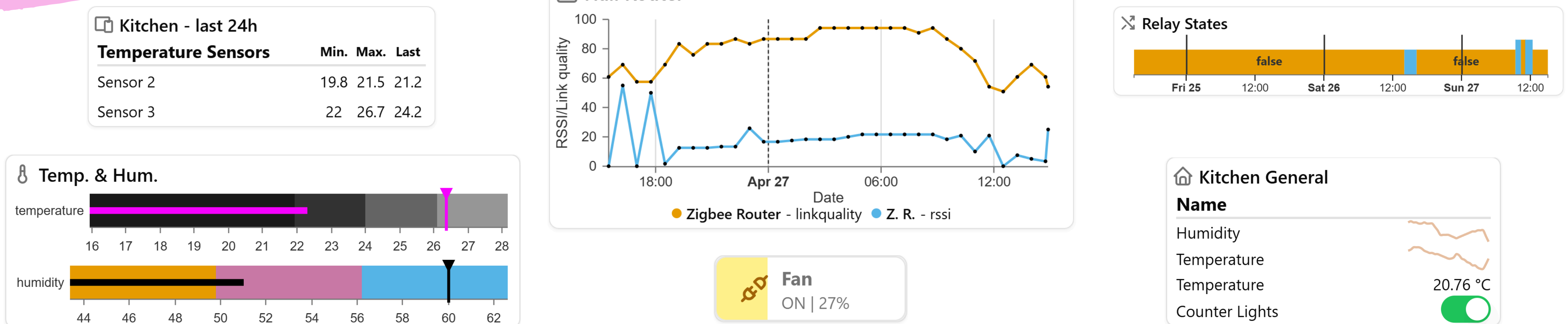


Fig. 2: Data Visualizations