

# Visualization of Data from the Participatory Budget System of the City of Most

Author: Filip Polomski

Supervisor: Ing. Jiří Hynek, Ph.D  
Consultant: Ing. Kamil Novák

## Motivation

- The city of Most lacks a centralized database, a tool for data management, map-based project visualization, advanced project search and a statistical dashboard for Participatory Budgeting.

## Participatory Budgeting

- A democratic process based on the active involvement of wide range of citizens in decision-making and voting on the allocation of public financial resources.

## Application Structure

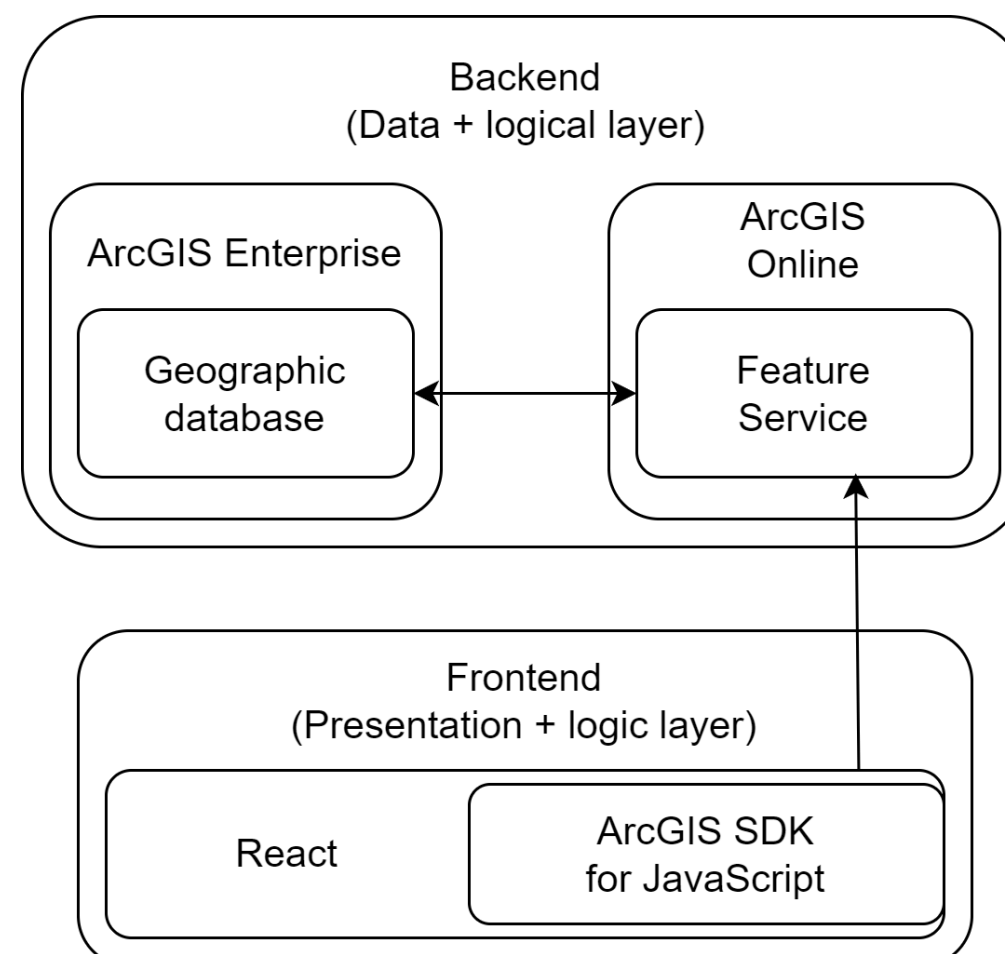


Figure 1: Application structure diagram

## Data Structure

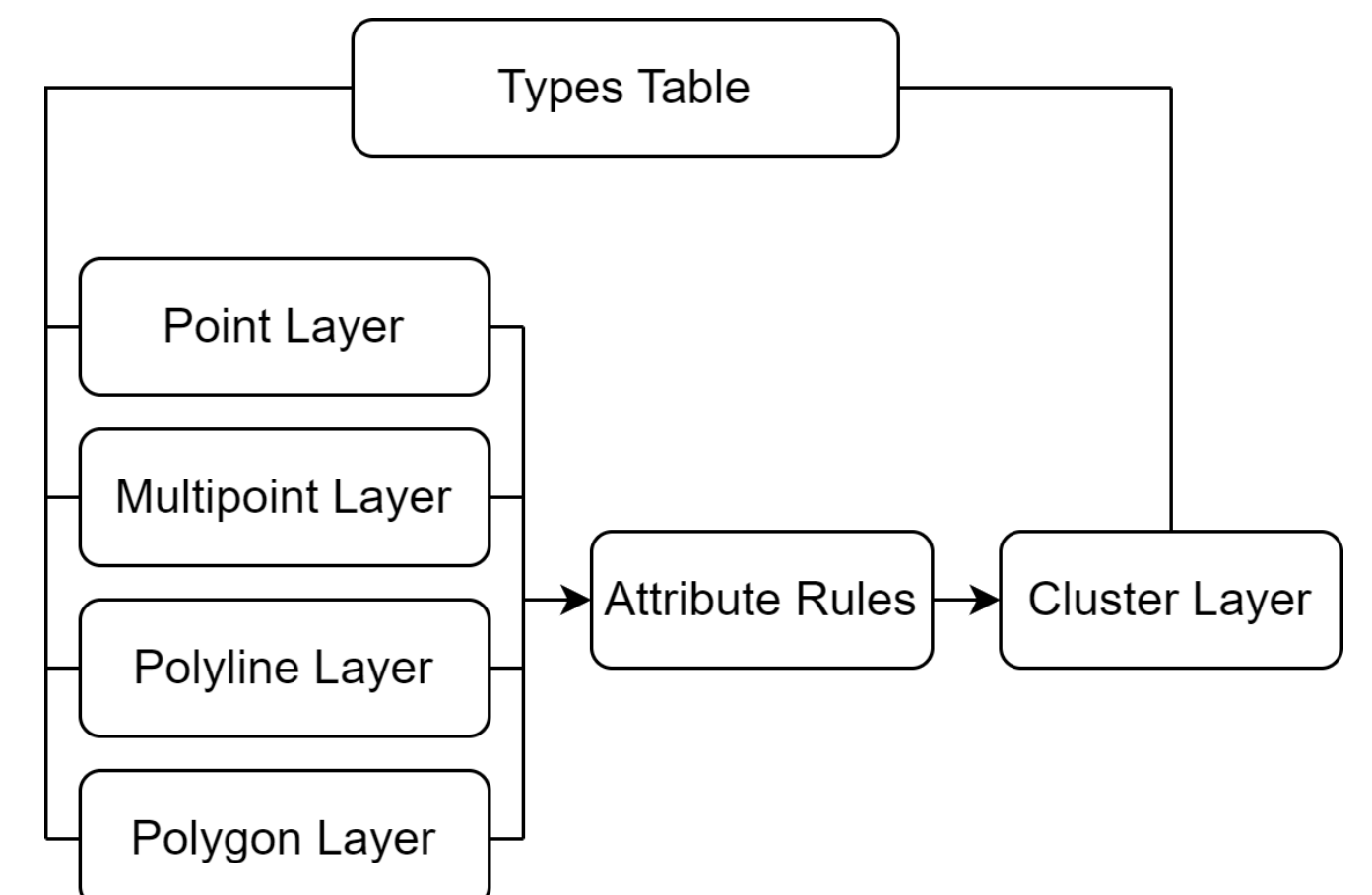


Figure 2: Data structure diagram

## Map Widgets

- Zoom in/out
- Default position
- Search
  - By Address
  - By Buildings blocks
- Basemap Gallery
- Filtration
  - By Years
  - By Projects Types
- Legend
  - Shows Projects Types
- Information
- Projects
  - Project gallery with search
- Dashboard
- Editor
  - Editing, Adding and deleting project
- Projects Types Settings
  - Editing, Adding and deleting projects types

## Application Screenshots

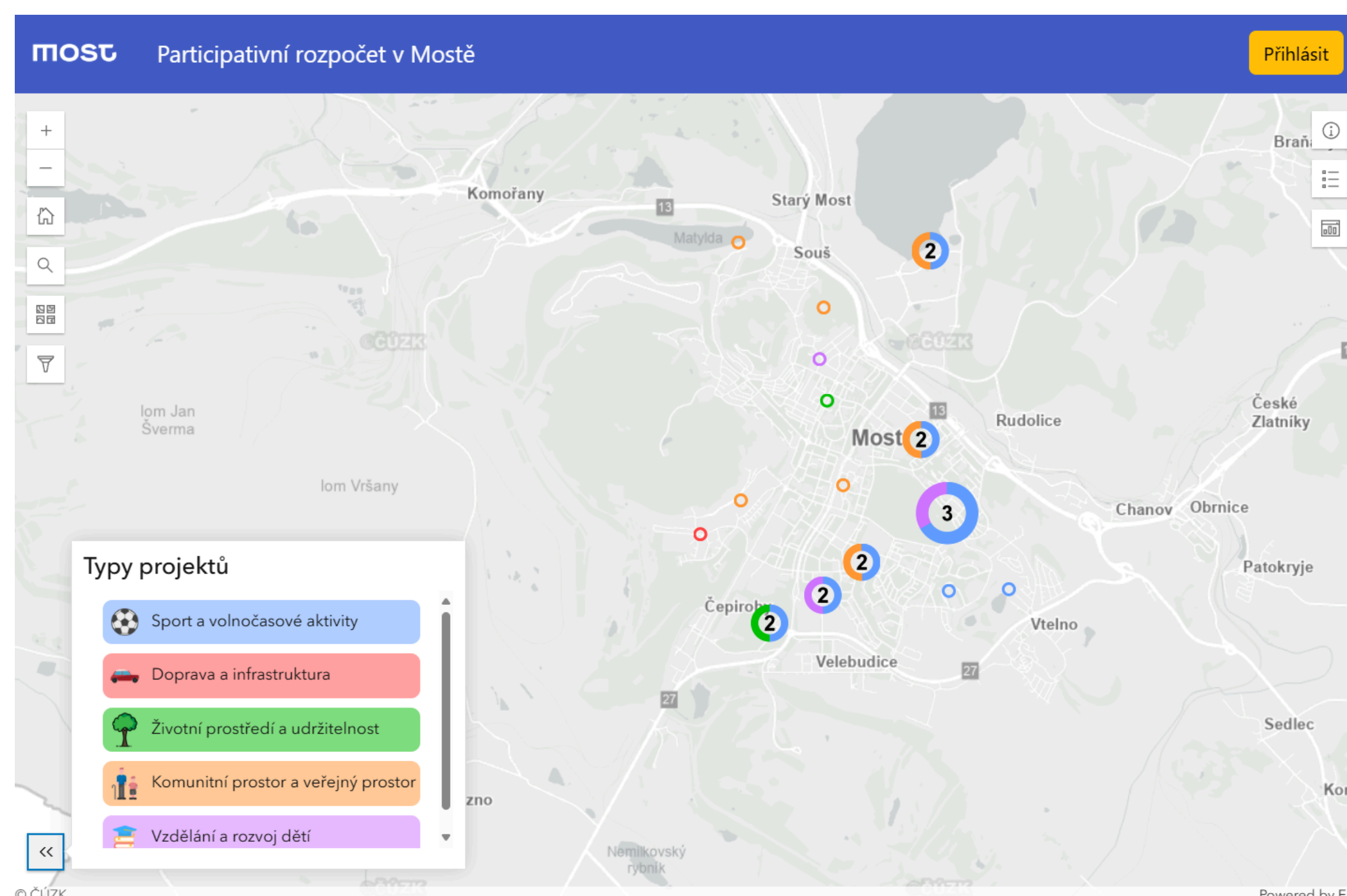


Figure 3: Public map for general public

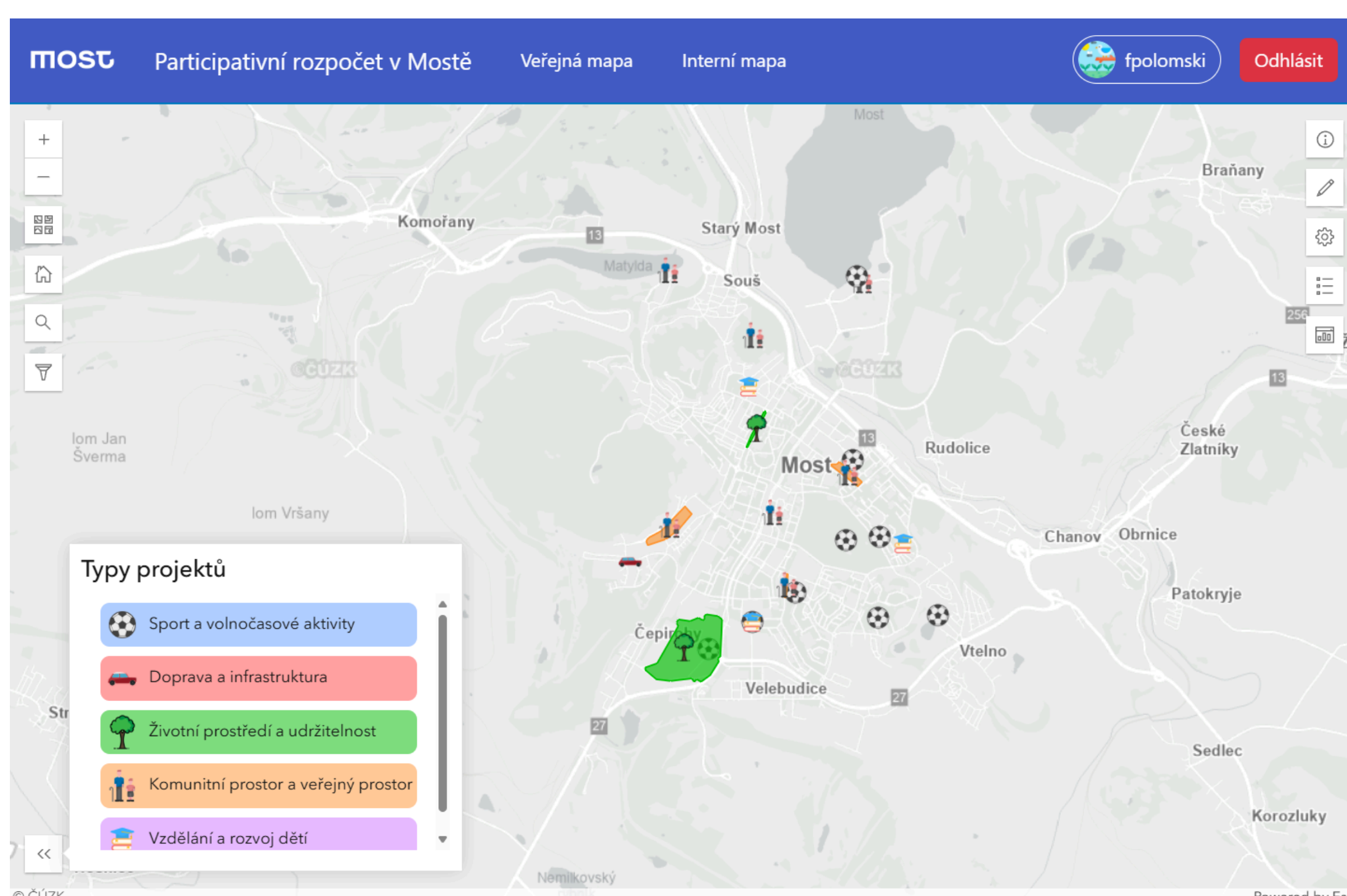


Figure 4: Private map for Most employees

## Public Map

- Clustering layer:** Groups projects at certain zoom levels, displaying original geometry when zoomed in.
- Filtering:** Allows filtering of project on the map.
- Project gallery:** Browse projects that advanced to voting.
- Dashboard:** Displays stats on projects in voting, winners, total costs and graphs.

## Private Map

- Access:** Has the same widgets as regular user, with access to all projects.
- Projects Types Settings:** Manages project type icons, names and colors displayed on the map.
- Editor:** Allows management of all projects on the map and adding new ones.